



**Around Pattishall**  
**234 • Spring 2024**  
*New Pattishall Bells*



## WE'RE HAVING A BARN DANCE!

Book your tickets now

**Saturday 9 March**

**7.30 pm**

**Pattishall Parish Hall**

Ceilidh band **THE NEW BEES**

**BAR - CASH OR CARD**

**RAFFLE - CASH OR CARD**

**BRING YOUR OWN NIBBLES**

Suitable for all, no experience needed

Prize for best dressed country and western outfit

**TICKETS - £12.50 PER PERSON**

*To book contact Suzanne*

*By text or WhatsApp on 07514 255702*

*Or email - [suzanne.raper@talktalk.net](mailto:suzanne.raper@talktalk.net)*

*Book now, pay on the night - cash or card*

*Come and have fun, yeehaw!*



## Pattishall Cafe

The Cafe is for all in the community and run by volunteers from Pattishall WI. We are fortnightly every other Friday, going forward until the end of June, all being well, when we will pause for a summer break, aiming to be back in the autumn.

We offer a variety of food from lunch to light bites, and always WI-made cake. There are free refills on hot drinks too. And all at very reasonable prices. So do come and try us out, you will be so glad you did.

12.00 – 2.00 pm

Pattishall Parish Hall, NN12 8NN

Dates up to our summer break are:

1 and 15 March

Easter Special on 29 March

12 and 26 April

10 and 24 May

7 and 21 June

Look out for our facebook posts on the Pattishall Community page and Pattishall WI page. See you soon.

Suzanne



## Local History Meeting

Are you interested in where you live or how to start finding out about it? If you would like to research your family history we can help. Everyone is welcome and we are pleased to hear about your interests or research.

We meet at Pattishall Parish Hall at 7.30pm on the following dates:

Thursday 28<sup>th</sup> March

Buildings in Ascote and Eastcote

Thursday 25<sup>th</sup> April

Buildings in Pattishall

*To be arranged*

Buildings in Dalscote, Fosters Booth and Cornhill

Donation of £1 towards the meeting. Further information from [iris@pattishallparish.org.uk](mailto:iris@pattishallparish.org.uk).

## Good Neighbours

With Spring nearly upon us we look forward to welcoming our members and friends to join us once a month in the coming year for a mixture of talks, social afternoons and outings.

March 14<sup>th</sup>

The A.G.M. and social afternoon

April 11<sup>th</sup>

We welcome David Wilcock whose talk will be of his time at Caswell

May 9<sup>th</sup>

We have the return of Roy Smart and his subject is *The Last Naval Hero*

June 13<sup>th</sup>

The first of this year's outings.

All our meetings are held on the second Thursday of the month at Cold Higham Parish Hall at 1.45pm. We look forward to welcoming all new members.

For further information please contact Jan Wallis on 01327 830306 or Richard Burgess on 01327 831612.



# Move **Massage** Pro PAIN & INJURY CLINIC

Aches & Pains  
Chronic Pain  
Sports Injuries  
Massage &  
Exercise Therapy  
Pain Management

Everyone Warmly Welcomed

www.Move**Massage**Pro.com

MOVE MASSAGE PRO Tristen **Attenborough** BSc., MSc. MSTA  
07734 429 423



## **Pattishall WI**

As I write this the snowdrops are bobbing their white heads about in the fresh breeze. Bunches of daffodils are in the florist shops promising all that wonderful Spring colour to come. Can't come soon enough for me!

Our next meeting is on Wednesday 13 March. It is our annual general meeting which sees the election of the committee and President and discussion of other bits of WI business. We keep that as brief as possible so that we can get on with enjoying ourselves with games, a quiz, refreshments and chit-chat. An informal and relaxed meeting once the election is done. Come along and enjoy the fun stuff.

The speaker for our next meeting on Wednesday 10 April has yet to be confirmed so why not come along and discover what surprise awaits. It will be informative and interesting that I promise.

In May we have our resolutions meeting when we discuss what issue of the day, as a national organisation, we will be working on and lobbying about for the coming 12 months and beyond. We have an adviser coming from County HQ to tell us all about the chosen resolution and what we can do to promote and influence the powers that be to be proactive about it. We will also have some fun too, so why not come along – Wednesday 8 May.

Ladies, you are always welcome to any meeting, as a visitor. You will be very welcome. You can also see what we are up to by checking out, liking and following, our facebook page – Pattishall WI. We look forward to meeting you at a meeting soon.

Suzanne  
President, Pattishall WI

## **Help Please!**

Volunteer distributor needed to deliver *Around Pattishall* to around 30 homes in Pool Close and Simons Walk, Pattishall. If you might like to help please contact Andy (email [ap@stewarts.me.uk](mailto:ap@stewarts.me.uk)) for further information.



## **Over 60s Christmas Luncheon**

Thank you to all of you who attended the luncheon held on Saturday 9<sup>th</sup> December. It was a great pleasure to see you all again and to welcome new people too.

The day was a great success and thanks goes to all the fantastic people who give their time to help:

Helen and Val who cooked the turkeys  
Helen and Joan who peeled veg  
Nigel for decorating the trees and hall, MC, pouring and serving drinks  
Amanda for delicious puddings  
Johnny for scrumptious sausages  
Laura for wonderful flower arrangements  
Amanda, Karen, Richie, Helen and Johnny in the kitchen  
Heather as chief 'washer upper'  
Julia, Rosie, Alia and Mia for serving meals  
Picnic in the Park and Pattishall Parish Hall for the photo books  
Mr and Mrs Anonymous for paying for the band  
Parish Council for its donation  
Tesco for the food donation  
Lions Club for the sherry  
And for all of you who came along and enjoyed the day.

As you know we will be doing it again this December, so look out for the invite later in the year.

I wish you all a very healthy and happy new year.

Muriel Hough, Volunteer





## COMMUNITY OPEN DAY

**FRIDAY 22 MARCH**

**3.00 – 9.00 PM**

**PATTISHALL PARISH HALL**

**“THE PAST, THE PRESENT AND THE FUTURE”  
YOUR PARISH, YOUR SAY**

Come and meet the parish councillors who work on your behalf to maintain and improve the parish we all live in. Find out what they have done, and continue to do. Have your say about what you would like to happen in the future to improve this special part of Northamptonshire that we are lucky to live in.

*Meet Pattishall School and the people behind our summer music festival, Pattishall Picnic in the Park, meet some of the team who run Pattishall Parish Hall and put on community events like Bonfire Night and the Senior Citizens Christmas lunch. Meet local clubs and groups  
Would you like to help out, or start a club or group?*

Meet local businesses too.

Lots of photos and information on display.

For more information email Iris, parish councillor, at  
iris@pattishallparish.org.uk

Refreshments available

## Gardening Club

The Gardening Club enjoyed an interesting talk by Laura Malpas on “Secrets and Scandals at Canons Ashby.”

Steve Malsher is leading the meeting on March 6<sup>th</sup> about rose pruning, so get your secateurs cleaned and sharpened!!

Steve Head is giving our April 3<sup>rd</sup> talk on “Wildlife gardening: Myths and Realities”.

It is hoped to visit Batsford Arboretum on April 17<sup>th</sup> for a spring visit,

All talks are held in the small hall at Pattishall Village Hall starting at 19.30. Anyone is welcome to come – £6.00 for non-members. Refreshments are served at the end of each meeting.

Jean Pugh  
01327 830909



## Pattishall Parochial Charities

Currently we have a vacancy for a Trustee. Parishioners who would like to apply for this vacancy please write to the Clerk providing details of your interest in this position, closing date is 14 April. The Trustees will then consider each application.

Letters should be addressed to:

The Clerk to the Trustees  
Grove Close  
Gayton Road  
Eastcote  
NN12 8NG

Or email [jayne40@gmail.com](mailto:jayne40@gmail.com)

Further information on Pattishall Charities can be found at: <https://www.pattishallparish.org.uk/parish-council/pattishall-charities>

## Def brillator in Cold Higham

As a joint project between Cold Higham Parish Council and Cold Higham Parish Hall Committee there is now a smart new def brillator on the outside wall of the Hall (see pictures below). This is now available for public use IN AN EMERGENCY. It has been registered on the national database so emergency services know its location.

A def brillator can save the life of someone in cardiac arrest. Anyone can use one, no training is needed. Audio/visual instructions are on the device to guide the user.

What does this mean for me?

Imagine a scenario. Someone near you collapses with a cardiac arrest. Act quickly:

1. Dial 999.
2. Start giving CPR. The operator will stay on the line to help. Keep this going while at the same time you ...
3. Send someone for a def brillator. The operator will give the location of the nearest one available and will give the access code to open the box.
4. The second person types in the access code and retrieves the def brillator.
5. Follow the instructions on the def brillator until an ambulance arrives.

More information on CPR and def brillators can be found on:

<https://www.bhf.org.uk/how-you-can-help/how-to-save-a-life/def-brillators/understanding-def-brillators-what-they-are-and-how-to-use-them>

Kim Attenborough  
07967 578025

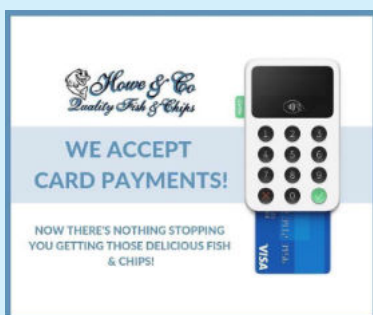




 **Van 4**





<http://evison.amsfleetmanager.com/?Token=45FE73C2-6AB3-4186-BD14-1FBB848C7463>



**HAPPY THURSDAY!**

**Every Thursday Evening the Fish & Chip Van is in**

Astcote  
Eastcote  
Pattishall  
Fosters Booth

  **07711 402066**



## **Picnic in the Park 2024 Saturday 13 July**

The Picnic crew are working away in the background on this summer's event. Did we mention that it is our 10<sup>th</sup> anniversary this summer? And did we mention that we have the country's top Abba tribute band to celebrate? It's gonna be amazing! Lots of other great bands booked, great food vendors, lots of bouncy castles, the climbing wall, laser tag, kids' zone, and lots of other awesome stuff going on. Do not miss it ...

Early bird tickets are on sale now. Get yours booked. Go to the website – [www.picnicinthepark.org.uk](http://www.picnicinthepark.org.uk). Do it now, go on! Tickets also available on the day, subject to availability. Any questions do go to the website or contact me on 01327 830279. Also do contact me if you would like to volunteer over the weekend. We would be delighted to have your help.

Suzanne  
Pattishall Picnic in the Park 2024



**Super Early Bird Tickets On Sale Now**

**Book Early**

**13th JULY 2024**

**First 500 Tickets SAVE 28%**



**SELLING FAST**

# PICNIC IN THE PARK

## PPITP.co.uk

**PATTISHALL PARISH HALL AND PLAYING FIELDS**

**NN12 8NN**



awarded **OUTSTANDING** by Ofsted!

A wonderful little 32 place nursery where a staff team of Teachers and Early Years Practitioners encourages the children to develop as individuals.

As a Forest School setting the children spend a great deal of time outdoors, in all weathers, climbing trees, gardening, exploring and building dens.

Our 5 star kitchen provides a healthy and home cooked meal that includes organic, free range and locally sourced.

We also run The Dragon Club for the children of Pattishall School. We open from 8.00 to 8.45am for breakfast club and 3.15 to 6.00pm for after school club where the children enjoy a healthy, freshly cooked tea and can join in a variety of indoor and outdoor activities.

Open 8am-6pm, 51 weeks per year.

For children from 6 weeks to 5 years.

Pattishall 01327 830202

[littledragons@live.co.uk](mailto:littledragons@live.co.uk)



# Pattishall CE Primary School



Schools are complex and it is challenging to sum them up in one word. Results are a small snapshot of how a school is performing and different schools get good results through different means. At our school, we use our Nurturing Positive Behaviour Policy, 'Zones of Regulation', an emphasis on strong relationships and a well-planned and engaging curriculum.

When the children come in in the morning, they check into a zone. Each zone covers a spectrum of emotions. The red zone is tense due to frustration or anger; yellow zone would be a fluttering tummy due to excitement, anxiety or excess energy; blue zone would be lethargy due to illness, tiredness or sadness and the green zone is 'I'm ok, and ready to learn'.

If a child is out of the green zone, someone will help them regulate. By making sure as many children as possible are in the green zone, our school is happy, calm, quiet and focussed on learning. Any children needing additional support can access our nurture provision or our Emotional Literacy Support Assistant (ELSA). We have also given ELSA support to individual parents and families through our Early Help offer.

As a result, our children feel valued and ready to learn, and our results (in pink) are well above local and national standards.

Aside from English and maths, we offer a broad and balanced curriculum; making sure that we nurture the body as well as the mind. Our children take part in inter-school competitions as well as house team events within school and we offer 10 clubs per week, before and after school. We always enter competitions with the aim to win and we place high value on both winning and losing, as both build resilience and sportsmanship. We are also one of the last remaining primary schools with a swimming pool that is well used throughout the summer months.

In January, we took our 40-strong choir to the O2 Arena to sing with 8000 other children in the Young Voices event; they are now warming up for Picnic in the Park later this year.

We are also the only primary school for miles with a brass band! Further still, all of Year 2 are learning the ukulele and all of Year 3 are learning brass instruments!

Friends of Pattishall School and over 30 families have donated a legacy tree to further the develop of our Forest School Garden. We have two Forest School leaders, and all children from reception to Year 6 get at least 12 hours of Forest School every year. We place great importance on this to provide the balance against the digital age in which we are now living.

## Reading, writing and maths combined

Percentage of pupils achieving the expected standard or higher

Number of pupils = 20



## Multiplication Table Check

This is data for 2022/23.

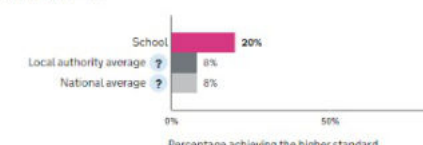
Mean average score

Number of pupils = 15



## Percentage of pupils achieving the higher standard

Number of pupils = 20



## Phonics year 1 screening check

This is provisional data for 2022/23.

Percentage achieving the expected standard in phonics

Number of pupils = 19





## Annual Pattishall Parish Litter Pick 2024

On Saturday 23<sup>rd</sup> March

Meet at Parish Hall at 10 am  
Hot drinks available from 9.30-10.30

High Viz Jackets, litter pickers &  
refuse sacks provided



lawrence furnishings  
RE-UPHOLSTERY CUSHIONS

**RE-UPHOLSTERY**  
01280 704437  
www.lawrencefurnishings.co.uk  
info@lawrencefurnishings.co.uk

**Y O G A**

**S P A C E T O  
B R E A T H E**

Monday 6pm & 7.15pm  
- Cold Higham

Tuesday 7.15pm –  
Pattishall

Friday 8.00am –  
Pattishall

£8 per hour

Booking necessary

Come and join us. No  
experience or special  
clothing needed.  
Everybody welcome.  
Please contact me if you  
have any questions.

Message or call Rachel on:

07710 437755 or email:  
[stone.holistic.33@gmail.com](mailto:stone.holistic.33@gmail.com)

Member of the Yoga Alliance  
Professionals  
[www.YogaAllianceProfessionals.org](http://www.YogaAllianceProfessionals.org)

Our children have access to class sets of laptops, iPads and Raspberry Pi computers. They start programming robots in Reception, animating in lower key stage two and programming using Python in Year 6. Feedback from secondary schools is that our children have excellent computing skills.

Alongside our Deputy Head Teacher – Miss Bruce – our School Council is working on mental health awareness. The artwork produced during Mental Health Awareness Week will be displayed in Holy Cross Church. We are also expanding our mental health support to our wider community.

In March, we will be taking part in World Book Day and Science Week. We also hope that the UK's tallest man – Paul Sturges – will join us to talk about inclusion in sport and run basketball workshops with all classes.

We are more than just a school.

### Vacancies and Community Projects:

We have positions for Middy Meal Supervisors, Foundation Governors and volunteers to read with the children:  
[www.pattishallschool.co.uk/vacancies](http://www.pattishallschool.co.uk/vacancies)

For professional design, installation & maintenance services, contact ...

**Mugleston's**  
**PLUMBING HEATING**

Andrew Mugleston, 20 Stubbs Road, Everdon, NN11 3BN  
[office@muglestons.co.uk](mailto:office@muglestons.co.uk) [www.muglestons.co.uk](http://www.muglestons.co.uk)  
01327 604406 07947 315860

Installation / maintenance / repair of  
gas, oil and solid fuel appliances  
Bathrooms, kitchens and heating systems  
Smart thermostats, Multi-zone and other upgrades  
Appliance servicing and Landlords certificates

5-star approval rating under the Trading Standards  
'Buy With Confidence' scheme

We also have several garden spaces, including an allotment area, that we will happily hand over (free of charge) to any keen gardeners in the parish who wish to expand their growing space: the added bonus being 150 willing volunteers to help with watering and weeding in the summer.

You can follow us on our social media:

Website: [www.pattishallschool.co.uk](http://www.pattishallschool.co.uk)

Twitter: @TeamPattishall

Instagram: pattishallceprimary

Facebook Page:

@pattishallceprimaryschool

Facebook Group:

Pattishall CE Primary Virtual Playground

At our school, we firmly believe that the children come first; they are at the heart of every decision we make. We are passionate that their learning journey is a partnership with you as you know your child better than anyone. Our door is always open and we are here to ensure that your child gets the best foundations for life.

If this sounds like the sort of school you want for your child, come and see us in action. Call 01327 830301 to book a personal tour with Emma McLean, Head Teacher.

**Lent Lunch**  
Continuation of studying  
**The Gospel of Mark**  
With a frugal lunch of soup,  
bread and cheese.  
Starts on February 15<sup>th</sup>  
11.45 – 13.15  
At Holmeview,  
8 Greenway Eastcote  
Dates  
February 15<sup>th</sup>, 22<sup>nd</sup> & 29<sup>th</sup>  
Continuing March 7<sup>th</sup>, 14<sup>th</sup> & 21<sup>st</sup>

To confirm your place, please ring  
Jean on 01327 830909 / 07711 329664  
or Sue on 01327 351219 / 07870 882660



## Mr Jon Campion

MBBS, BMedSci, FRCS  
Consultant Orthopaedic Surgeon

## Mr Gary Mundy

MBCbB, FRCS, Diploma Sports Med  
Consultant Orthopaedic Surgeon

**Expertise and the Highest Professional Standards  
In well equipped and comfortable surroundings**

### Specialising in:

- Knee & Hip Problems
- Arthritis & Joint Replacement Surgery
- Sporting Knee Injuries
- Arthroscopic “Key hole” Surgery
- Joint injections

## Virtual Clinic Appointments

**Video & Telephone consultations available**

*Registered with all major health insurance providers With  
competitive rates for non-insured “self paying” patients*

**Call 0800 7720620**

Or

**Email: [info@northamptonorthopaedics.co.uk](mailto:info@northamptonorthopaedics.co.uk)**

**[www.northamptonorthopaedics.co.uk](http://www.northamptonorthopaedics.co.uk)**

## Holy Cross Church Tours

At Holy Cross I had the pleasure of showing round a large group of people from the U3A Church Visiting Group. Chris Bulleid gave small groups a guided tour of the tower and a climb up to see the bells, for the more hardy.

Concerned about my scant knowledge of the church, I turned to two people who have already researched church and village history in recent years – Iris Illingworth and Richard Moss via his guide book. Both were most helpful. During this time I came to appreciate the unique features of the church, of which an early building is first mentioned in the Domesday book in 1086.



Did you know our church once had two vicars at the same time? In fact, for several centuries there were two vicarages. The thatched upper vicarage still stands at 1 Church Street, Pattishall.

On entering, the visitors commented on the light in the church, and I have to agree

that it is a beautiful interior, with its rounded anglo-Norman arch (dated c.1150). The heating and lighting added a warm glow and the visitors enjoyed a guided tour around the church followed by coffee and biscuits.

This could set a precedent for future church tours – we can lay on the refreshments and entertainment hearing the bells ring, so do get in touch if you'd like to know more. Information will be displayed at the Parish Council Community Open Day on Friday 22<sup>nd</sup> March.

Alison Brierley, Churchwarden  
[albrierley@btinternet.com](mailto:albrierley@btinternet.com)

## Neighbourhood Watch

Join Pattishall Parish Neighbourhood Watch Scheme and sign up to receive emails on:

- Police messages of local incidents
- Warnings of latest scams
- Local events

Register at:

<https://www.ourwatch.org.uk/scheme/59828/pattishall-parish-s27>

or scan the QR code. You can unsubscribe at any time.



## We live in a very safe village

If you would like to receive up-to-date information on NHW please contact

Linda Hemming (NHW Coordinator)

[linda\\_hemming@hotmail.com](mailto:linda_hemming@hotmail.com)

07756 027051



THE ROTARY CLUBS OF NORTHAMPTON  
AND NORTHAMPTON WEST  
A ROTARY D1070 PURPLE EVENT

# CLASSIC

## ★ Car Rally & Run ★

THERE WILL BE STATIC DISPLAYS OF  
EXCEPTIONAL CLASSIC CARS AND VINTAGE MOTORCYCLES



NO ENTRANCE FEE  
DONATIONS ON THE DAY FOR ROTARY CHARITIES WHICH INCLUDE:  
FOOD BANKS, HOPE CENTRE, LOWDOWN, AIDS OUT  
AND OTHER CHARITIES

A GRAND TOUR FOR THOSE WHO WANT  
TO SEE PICTURESQUE NORTHAMPTONSHIRE

**28th April**

PLEASE REGISTER FOR FULL  
DETAILS OF THE EVENT

THE PLAYING FIELD BRAMPTON COUNTY PRIMARY SCHOOL  
HARLESTONE ROAD CHAPEL BRAMPTON,  
NN6 8AW  
**NO DOGS**

## TOWCESTER & DISTRICT ART SOCIETY EASTER EXHIBITION & SALE

SATURDAY 30TH MARCH 10AM - 4.30PM  
SUNDAY 31ST MARCH 10AM - 4.30PM  
MONDAY 1ST APRIL 10AM - 4.30PM

TOWCESTER TOWN HALL  
86 WATLING STREET, TOWCESTER NN12 6BS



OVER 150 ORIGINAL WORKS OF ART IN ALL MEDIA FOR SALE  
COME SUPPORT YOUR LOCAL ARTISTS.  
FREE ADMISSION

VISIT US AT [TOWCESTERART.CO.UK](http://TOWCESTERART.CO.UK) AND  
ON FACEBOOK @TOWCESTER & DISTRICT ART SOCIETY

## Pattishall Parish Hall and Playing Field Associations



A great time was had by all who attended the Senior Citizens' Christmas lunch. Thank you to the Hall Committee that funds the event with help from Pattishall Parish Council, and to the dedicated team who do all the planning and catering on the day.

We look forward to all the events that will take place in 2024 at the Hall and Fields -

Community Open Day by Pattishall Parish Council – Friday 22 March

Pattishall Picnic in the Park Music Festival – Saturday 13 July

Pattishall Produce Show – Sunday 8 September

Pattishall Cricket Club fixtures going on through the summer

And much more going on too.

If you would like to hire the hall for a family event, party, etc, please contact Amanda, the Bookings Officer, on **07988 037820** or [pattishallbookings@gmail.com](mailto:pattishallbookings@gmail.com) and she will be happy to let you know about availability. You can also check out details about the parish hall on the parish website at [www.pattishallparish.org.uk](http://www.pattishallparish.org.uk).

Suzanne Raper

Pattishall Parish Hall & Playing Fields Committees

### Available for Hire

Ideal venue for birthday, anniversary, children's, retirement and Christmas parties. In fact, parties for any event.

Also suitable for many other gatherings and events where you might need a large space and kitchen facilities.

Two rooms to choose from

Small Hall accommodates 30-50

Large Hall accommodates 150

Use of kitchen, tables, chairs, cutlery and crockery included in hire fee.

Discounted hire fees, at very reasonable rates, for residents of Pattishall Parish.

Check availability with Amanda, Bookings Officer:

email – [pattishallbookings@gmail.com](mailto:pattishallbookings@gmail.com)

phone – **07988 037820**

Full details available on the Parish website:

[www.pattishallparish.org.uk](http://www.pattishallparish.org.uk)

# YOGA

Monday mornings 10.00 - 11.30 am.  
Pattishall Parish Hall.

Very experienced teacher, running classes in and around Towcester for over 40 years. And of course fully qualified.

Classes run in ten week session. Next session starts April 8<sup>th</sup>.  
Come along to first class and then decide if you want to join.

Fee £60.00  
Contact IRIS

**01327 351920**  
**07542 351642**

[Yogatowcester@gmail.com](mailto:Yogatowcester@gmail.com)

### Regular Events at Pattishall Parish Hall or Playing Field

#### Hall – Clubs and Activities

U3A Bridge club  
Pattishall Cubs & Scouts  
Keep Fit  
Morning Badminton  
Pilates  
Hyodokan Karate and Self Defence

#### Line Dancing

Independent Learning  
Gardening Club  
WI  
Sing & Sign  
Yoga

#### Meetings

Hall & Field Committees meetings  
Parish Council meeting

#### Field – Events & Activities

GLK football  
Sixfelds Rangers football

Pattishall Hall and Fields Associations now have a linktree address: <https://linktr.ee/pattishallparishhall>  
If other groups wish to join, please send an email to [pattishallsocialmedia@gmail.com](mailto:pattishallsocialmedia@gmail.com)

## The Well Group

### The Well Group for Women

meet most months, usually on the last Thursday

### 12midday-2pm for Lunch

with a speaker on a Christian theme.

More information is given in Around Pattishall or The Messenger. Please contact Alison Brierley or Ann Atkin if you would like to join us.

Alison: [albrierley@btinternet.com](mailto:albrierley@btinternet.com) 07794 742286  
or Ann: [ann.atkin51@btinternet.com](mailto:ann.atkin51@btinternet.com) 01327 830907

21<sup>st</sup> March  
Diane Forsyth  
'Changing Direction'

April  
TBA

At Astcote Methodist Church

## Cold Higham Parish Hall

### Parish Hall Events & Update – Looking to Spring 2024

The Cold Higham Parish Hall Committee would like to thank local residents for all their continued amazing support throughout 2023. We hosted two Quiz Nights, several tea & cakes events and a fete to celebrate the King's Coronation as well as our annual Christmas "Mulled Wine, Carols and Mince Pies" event in December. We saw so many familiar (and new) faces at our events throughout the year and raised some essential funds for the upkeep of the hall. Fantastic!!

We hope to build on that support this year and will be hosting a series of events over the coming months.

Dates for our current scheduled 2024 events are as follows:

Saturday, March 16<sup>th</sup> – from 7pm – General Knowledge Quiz (Chilli supper served, £10 per adult and £6 per child) Team booking via Karl Lange – 07801 716872

Sunday, 16<sup>th</sup> June 2024 Cold Higham Parish Hall Committee, together with Cold Higham Parish Council, will be hosting a tea party at the hall as part of events to commemorate the 80<sup>th</sup> Anniversary of D-Day. There will be a tombola and garden games, with a full lunch spread available. Finally, back by popular demand, Airheadz are also joining us with their trapeze and circus skills for all to enjoy!

We are proposing to have a further quiz night on Saturday, June 22<sup>nd</sup> 2024, and Summer tea & cakes in the garden on 31<sup>st</sup> August 2024. Further details about these events, including how to register a team for the quiz night, will follow closer to the time.

Please do come along and support us at any or all of the above events. It is lovely to see people enjoying our Parish's wonderful facility.



The Parish Hall remains available for regular and one-off bookings and we encourage as many individuals and organisations as possible to consider Cold Higham Parish Hall as a venue for their parties, meetings or classes. The hall can be hired for £8 per hour (non residents) or £7 per hour for residents of Cold Higham Parish (including furniture, cutlery/crockery etc). All enquiries for bookings can be made via Karl Lange, who can be contacted at [KarlNLange@outlook.com](mailto:KarlNLange@outlook.com) or 07801 716872.

Finally, we would like to take this opportunity to confirm the date of this year's Annual General Meeting, which will be held on Wednesday, 22<sup>nd</sup> May 2024, at Cold Higham Parish Hall at 8pm. If anyone from the Parish is interested in joining the Hall Committee, or would simply like to attend the AGM, please make a note of the date in your diaries.

Thank you again all and we hope to see you at our 2024 events!

Cold Higham Parish Hall Committee



## SMITHS NEWSAGENTS

*Enjoy the luxury of  
a newspaper  
delivered to your door!*

Ring us on  
**01295 268499**

or e-mail

[info@smithsnewsagents.co.uk](mailto:info@smithsnewsagents.co.uk)



## TOWCESTER FARMERS' MARKET

2<sup>nd</sup> FRIDAY  
OF EVERY MONTH

Sponne Arcade Car Park  
9am until 1.30pm

*Fresh local  
produce on sale*

Managed for the Community  
by Towcester Lions Club

Reg. Charity No. 1133261

## Crafternoon

Every Monday  
2-4pm

Astcote Methodist Church

Bring your sewing/knitting/cross stitch  
... any craft you do.

£3 to include tea/coffee and biscuits

**All Welcome**

Organised by A.M.C. – for more info contact Kate  
830115/Ann 830907





**Saturday 20 April**

**7.30 pm**

**Holy Cross, Pattishall**

**Ploughmans £12.50**

Tickets: Wendy or Jean

01327 830583

01327 830909

**ASTCOTE METHODIST  
CHURCH**

**COME AND MAKE AN  
EASTER GARDEN**

**Good Friday**

**29th March 10-12.30**

**Refreshments**

**All Ages – Children & Adults -  
are Welcome**



### ***Pattishall Hall and Field Committees need Volunteers!***

We really do need some help. Do you have an hour or two to spare once a month and would like to help keep our parish hall and field running for the community?

We meet once a month on the first Thursday at the Hall at 7pm and I promise we are a friendly bunch. Or if that kind of regular commitment isn't for you how about just putting your name forward to help when we put community events on, like bonfire night or the Seniors' Christmas lunch? Either way we would be delighted to hear from you.



For more information please contact Suzanne on 01327 830279 or [suzanne.raper@talktalk.net](mailto:suzanne.raper@talktalk.net).

### **Pattishall Produce Show**

Happy springtime and let's get planting & growing for the 2024 Produce Show! Categories below and we look forward to some fabulous entries on Sunday 8 September. For up-to-date information or to ask a question, please visit our Facebook page <https://www.facebook.com/PattishallProduceShow>.

#### **SECTION A: VEGETABLES**

*Any variety; should match*

- Five onions
- Five potatoes
- Three carrots (with tops)
- Five pods of French beans
- Five runner beans
- Five large tomatoes
- Five small tomatoes
- Three courgettes
- Three beetroots (trimmed)
- One cucumber
- One pumpkin or squash (not courgette / marrow)
- Sweetcorn – two ears
- Longest runner bean
- Longest parsnip
- Heaviest marrow
- Strangest shaped vegetable
- A tray of mixed vegetables (max 5 kinds in an attractive display)



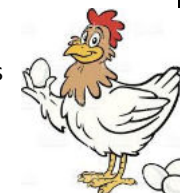
#### **SECTION B: FRUIT**

- Three apples
- Largest apple
- Three pears
- Five plums or damsons
- A plate of berries – single or mixed
- A tray of mixed fruit (max 5 kinds in an attractive display)

#### **SECTION C: EGGS (Poultry)**

*Fresh eggs to be brought in whole*

- One egg
- Three matching eggs
- Heaviest egg
- Brightest yolk



#### **SECTION D: FLOWERS & PLANTS**

- Three roses (same OR different)
- Rose, one specimen
- Dahlia, three blooms (same OR different varieties)
- One houseplant
- Container of mixed indoor or outdoor plants
- Vase of home-grown mixed flowers (horticultural, NOT artistic quality)
- Five different culinary herbs in a vase
- Tallest sunflower – adult entries

#### **SECTION E: FLORAL ART**

- "Go to work on an egg"
- "Go for gold"
- "It's got to be green"
- An arrangement in a wine glass





## LOCAL MOBILE HAIRDRESSER

Billie

**GENTS ~ LADIES  
CHILDREN**

*To do Great Work  
is to  
Love what you do*

**07715 390 257**

[b.stoyles@btinternet.com](mailto:b.stoyles@btinternet.com)

 [197Barbers](https://www.facebook.com/197Barbers)

\* No colouring service  
available



1 Watling Street East,  
Fosters Booth NN12 8LB

**01327 830391**

[www.peggottyslounge.co.uk](http://www.peggottyslounge.co.uk)  
[info@peggottyslounge.co.uk](mailto:info@peggottyslounge.co.uk)

### Sunday Lunch

A Range of Traditional British and European Dishes

Set Menu Available Mon – Thurs (2 Course £14, 3 Course £18)

Nepalese Chefs Cooking Authentic Nepalese Food

A Range of Home Made Desserts

Takeaway and Delivery Service Available (Free Delivery Within 5  
Mile Radius of Fosters Booth for Orders over £20)

Please Check Our Website or Call 01327 830391 for More  
Information About Our Specials

Function Room Available

**Open from 12, All Day, Every Day**



The council meets at 7pm in the Parish Hall on the second Thursday of each month throughout the year, except for August when no meeting is scheduled. An agenda and draft minutes are available on the Pattishall Parish website ([www.pattishallparish.org.uk](http://www.pattishallparish.org.uk)). Parishioners are very welcome to attend or contact one of the council members listed below, should they wish to raise a point but cannot be at the meeting in person.

### The Parish Council

Ann Addison (Clerk): 01604 858226  
[ann.addison97@gmail.com](mailto:ann.addison97@gmail.com)

Barry Evans (Chairman): 01327 830523  
[sixpencesheep@aol.com](mailto:sixpencesheep@aol.com)  
*Environment, Around Pattishall & allotments*

David Hodges (Vice Chair) 01327 830679  
[hodgesm@hotmail.co.uk](mailto:hodgesm@hotmail.co.uk)  
*Grass mowing, hedges, church & burial grounds*

David Keeble 01327 830792  
[keeble855@btinternet.com](mailto:keeble855@btinternet.com)  
*Planning*

Mark Mitton 01327 359400  
[mbm@pwc.uk.net](mailto:mbm@pwc.uk.net)

John Russell 01327 830012  
[johna.russell@btinternet.com](mailto:johna.russell@btinternet.com)  
*Maintenance & footpaths*

Fiona Mytton 01327 830943  
[fmytton@gmail.com](mailto:fmytton@gmail.com)  
*Lighting*

Nigel Banister 07762 146838  
[nigel.banisterpc@outlook.com](mailto:nigel.banisterpc@outlook.com)  
*Highways, Facebook*

Iris Illingworth 07786 012123  
[iris@pattishallparish.org.uk](mailto:iris@pattishallparish.org.uk)  
*Grants, notice boards, school liaison & biodiversity*

Suzanne Raper 01327 830279  
[suzanne.raper@talktalk.net](mailto:suzanne.raper@talktalk.net)  
*Biodiversity, liaison with community & neighbouring parishes*

Should parishioners have a concern or require advice on any of the above then please contact the councillor concerned and/or Ann Addison, the Parish Clerk.

### Council News

We are very pleased to welcome Suzanne Raper to the parish council. Suzanne has attended many of our meetings representing the Parish Hall, so is well versed in the machinations of parish council business. There has been an audit of portfolios held by the councillors and some changes of responsibilities have been made to help with the running of activities within the parish.

### Community Open Day:

#### 'The Past, the Present, the Future'

This event will be held in the Parish Hall on Friday 22<sup>nd</sup> March from 3pm to 9pm. Come and meet the parish councillors who work on your behalf to maintain and improve the parish we all live in. Find out what they have done and continue to do. Have your say about our parish. Find out how the council manages their budget and allocates money for activities & projects within the parish. Clubs, organisations, and local businesses will be represented and refreshments available. For more information email Iris Illingworth (parish councillor) at [iris@pattishallparish.org.uk](mailto:iris@pattishallparish.org.uk). This is an important community event which should not only prove interesting & informative but also enjoyable.

### Litter Pick

The annual Litter Pick will take place on Saturday 23<sup>rd</sup> March from 9:30 to 12:00. It is an opportunity for residents to get together to tidy up the parish and take pride in our environment. Litter pickers, high-vis vests & refuse sacks provided.

### Lighting

Ninety-seven of our lights now have LED lanterns, with a further one on order. The majority of the LED lanterns have part night cells. The parish council recently agreed to install a further twenty-one part-night cells and to upgrade our three PLT lights with LED lanterns and part night cells, in the next financial year, which begins in April. We estimate that our energy consumption has reduced by about two thirds largely as a result of installing the LED lanterns and part night cells. This is good news in view of the continuing high energy costs.

### Highways

A 40 mph speed limit coming into the parish on Banbury Lane from the East has been



# Lawnmower Servicing & Repairs

For all your garden machinery call Ian:

**01327 830908**  
**07801 088131**

*Lawnmower servicing from £45*



Shear Sharpening  
Mowers

Ride-ons

Strimmers

Hedgecutters

Chainsaws



New & Second Hand Sales

FREE Mower Collection/Delivery

**IRH ■ Servicing & Repairs**  
Est. Over 17 years

Units 3-4 Manor Farm, Anna's Lane,  
Dalscote, Northants, NN12 8QG

approved. The process of laying double yellow lines at the top of Fosters Booth Road to make the entrance to the road off the A5 safer is ongoing and approved. We are looking at other traffic-calming measures on Banbury Lane and in Astcote possibly modern SIDs (Speed Indicator Devices) (SID is son of VAS – Vehicle Activation Sign) and maybe a chicane (on Banbury Lane only). The council are investigating gate type signs on entry into the Parish from Banbury Lane and into Astcote High Street off the A5. In February our local MP, Andrea Leadsom, visited the parish including Leys & Festival Roads to see the work conducted, and Radio Northampton broadcast from the Banbury Lane where a new road planning technique was being used.

#### Hedges, Trees & Footpaths

The council is looking to conduct an audit of the trees that it is responsible for and to then ascertain which, if any, are in need of attention. If any parishioner has foliage (trees, bushes etc) that either obstructs footpaths or lighting would they kindly ensure that it is trimmed back. Trees at the Booth Close Playing Field and at the top of Butchers Lane are going to be trimmed for safety and ease of grass mowing.

#### Burial Plots

The council has met with Tim Ward, the local undertaker, to map out extra plots in the designated area for burials. This will give us a few extra plots, but dialogue is ongoing with Peterborough Diocese.

#### Maintenance

The notice board at Eastcote has been replaced and the Astcote & Pattishall boards have been reglazed. New signage has been put up at the three play areas incorporating our new parish logo.

#### Planning

Since the *Save Towcester Now* team met National Highways, the latter has written to the Case Officer updating its ongoing concerns with the proposed DHL Tove roundabout mitigation and its transport modelling, noting that the latest Cumulative Impact Assessments have still not been undertaken using the agreed WNC approach. National Highways continues to recommend that the application is not determined at this time.

#### D-Day

On the 6<sup>th</sup> June it will be the 80<sup>th</sup> anniversary of the D-Day landings. The council would like to know how parishioners would like to mark this occasion. Please send your thoughts to the Chair (Barry Evans) 07790 041494 or [sixpencesheep@aol.com](mailto:sixpencesheep@aol.com) so that plans may put in to motion.

## Cold Higham Parish Council

[www.coldhigham-pc.gov.uk](http://www.coldhigham-pc.gov.uk)

#### Budget and Precept 2024/2025

The Parish Council has again been very prudent in discussing with contractors how to balance must-do maintenance in the Parish with could-do maintenance, settling on a precept figure that in total is only £100 more than 2023/2024. WNC is proposing to raise Council Tax by 4.99% (around £14.9m), including 2% of the increase going towards adult social care, as specified by the Government. This increase equates to an average rise of £1.63 a week on a Band D property.

#### Maintenance of public footpaths, rights of way

During the meeting to discuss the VAS signs and the HGV signs, it was noted that there is a broken footpath sign in the Parish; the Cold Higham village sign coming from the A5 is very discoloured/faded; and there is a broken Grimscote sign as well. These have all been reported and replacements requested through Fix My Street.

#### Churchyard/Cemetery

The Cemetery Policy has now been reviewed with some small changes to the policy concerning the burial of cremated remains. The revised policy can be viewed on the Parish Council website [www.coldhigham-pc.gov.uk/uploads/cemetery-rules-and-regs-2023-review.pdf](http://www.coldhigham-pc.gov.uk/uploads/cemetery-rules-and-regs-2023-review.pdf). A significant amount of work was carried out to tidy the Churchyard, remove ivy and pollard the trees. What a great job has been done by Blackwell Garden Services, the Churchyard looks much more open and tidier.

# Support Pattishall Playing Fields Join the Tote for £12 per year

Monthly cash prizes  
Half of all proceeds go to  
support the Playing Field

Contact Karen:  
01327 830042

[treas@stewarts.me.uk](mailto:treas@stewarts.me.uk)

Thank-you, your support is appreciated

registered charity no: 304233

## Country Comforts

### MEALS ON WHEELS

Do you know someone that needs a hot cooked meal?

Freshly cooked 2 course meals delivered to your door. Monday - Friday 12pm-2pm  
Order once or as often as you like. **NO CONTRACTS!** We deliver to Towcester, Brackley and  
surrounding villages. For orders and enquiries please contact Marie on

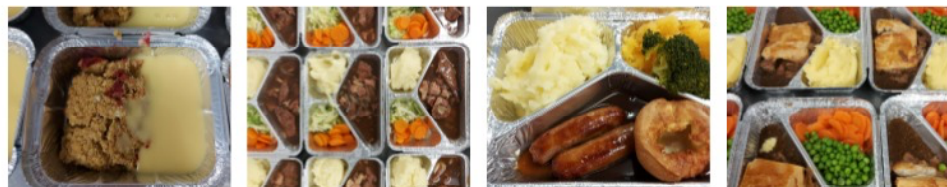
07388935803 or [countrycomforts20@yahoo.com](mailto:countrycomforts20@yahoo.com)

Check out our website and Facebook to see the menu and for more info.

[www.countrycomforts.wixsite.com/countrycomforts](http://www.countrycomforts.wixsite.com/countrycomforts)

Price includes delivery.

Meals £8



### DHL Warehouse

Save Towcester Now reports that the latest submission to WNC by DHL is focussed on the supplementary planning document that was adopted by WNC in Oct 2022, and says that it is 'fawed' and 'afforded very limited weight as a material consideration'. The application is now over 2 years old with no committee date set, objections and more requirements still coming from National Highways on traffic modelling, road safety & cumulative modelling plus questions from the Flood Authority on drainage methods.

### Vehicle Activated Speed (VAS) Signs

A Traffic Survey Report carried out by the Safer Roads Team in Northamptonshire Police between 6/12/22 and 13/12/22 on Banbury Lane in Cold Higham showed that 9,269 vehicles went through in 1 week! Even more surprising is that 72% of them were speeding. This has not improved. A meeting took place on 9<sup>th</sup> January between the Parish Council and Highways to discuss site placement of VAS signs but also what else could be done to discourage the serious level of speeding on Banbury Lane through Cold Higham. Discussion around repainting the 'slow' writing and possibly adding 30mph roundels to the road as you enter the village may help. This has now been added to the Highways works list.

### HGV issues in Grimscote

Three locations have now been agreed as suitable for signage "No Access for HGV vehicles" including the A5, the telephone box and the current location of the temporary sign. We are now in a position to move forward with this after a revised quote and help from Highways.

### Telephone Box, Grimscote

This continues to look very smart. The last job is to put in new toughened glass, and now that materials have been received the work can be undertaken soon (subject to the weather).

### Parish Litter Pick

This will take place on Sunday 3<sup>rd</sup> March starting at 10am. Please will all volunteers assemble at the letter box in Cold Higham and the phone box in Grimscote. Please bring your own gloves, but litter picks, hi-vis vests and bags will be provided.

Kim Attenborough, 07967 578025

## Pattishall Cricket Club



As the final arrangements are coming together for the 2024 season, we are looking forward to another busy summer of cricket. Whilst we are still waiting on confirmation of a couple of fixtures, we already have a full fixture list which includes the now annual fixture with Eastcote and we are looking forward to returning to the Blakesley 7's where we hope to repeat the success we had a few seasons ago.

### Dates for the diary:

AGM 19/03/24 @19:00 - Peggottys  
Practice sessions will resume at the playing fields from Tuesday 09/04/24 at 18:15 for around an hour and will then continue every Tuesday until 10/09/24

### 2024 Fixtures:

21/04/24 – Pattishall Cricket Club (H)  
28/04/24 – Maids Moreton (H)  
12/05/24 – Eastcote (H)  
19/05/24 – Blakesley (H)  
02/06/24 – Towcestrians (H)  
09/06/24 – Blakesley 7's (A)  
23/06/24 – Farthingstone Nomads (A)  
30/06/24 – Bugbrooke (A)  
14/07/24 – Towcestrians (A)  
28/07/24 – Bodicote (A)  
04/08/24 – Castlethorpe (H)  
18/08/24 – Blakesley (A)  
08/09/24 – Farthingstone Nomads (H)  
15/09/24 – Bugbrooke (H)

As last season, we have team kit (playing or casual) available so if you want to get anything please visit the team store at <https://seriouscricket.co.uk/teamwear/stores/pattishall-cricket-club/>

If you are interested in playing or joining as a social member please get in touch or come along to the AGM, Tues. evening training, or a match. If you haven't ever played or it's been a while, please don't let that put you off, we have a wide range of ages and abilities in the side, but everyone buys into the club ethos that we are here to have fun!

Pattishall Cricket Club

[pattishall.cricket@gmail.com](mailto:pattishall.cricket@gmail.com)

[www.facebook.com/people/Pattishall-Cricket-Club/100057589412848/](https://www.facebook.com/people/Pattishall-Cricket-Club/100057589412848/)



| MONDAYS TO SATURDAYS except Public Holidays |      |      |     |      |      |      |      |      |        |      |  |
|---------------------------------------------|------|------|-----|------|------|------|------|------|--------|------|--|
|                                             | 87   | X91  | 87  | 87   | X91  | 87   | 87   | 87   | X91    | X91  |  |
|                                             |      |      | Sch |      |      |      |      |      | MF Sat |      |  |
| Brackley Market Place                       | 0644 | 0703 |     | 0827 | 0935 | 0944 |      | 1445 | 1630   | 1635 |  |
| Brackley Tesco                              | x    | x    |     | x    | x    | x    |      | 1447 | x      | x    |  |
| Brackley Waynflete Ave                      | x    | x    |     | 0830 | x    | x    |      | x    | x      | x    |  |
| Brackley SpringfieldWay                     | x    | 0707 |     | 0833 | 0939 | x    |      | 1455 | x      | x    |  |
| Brackley TurwestonRd N                      | 0649 | 0715 |     | 0841 | 0948 | 0949 |      | 1503 | 1633   | 1638 |  |
| Syresham Kings Head                         | x    | x    |     | 0846 | x    | x    |      |      | x      | x    |  |
| Silverstone UTC                             | x    | x    |     | 0853 | x    | x    |      |      | x      | x    |  |
| Silverstone White Hart                      | x    | 0724 |     | 0900 | 0957 | x    |      |      | 1642   | 1647 |  |
| Silverstone opp Catch Yard Farm             | 0700 | 0725 |     |      | 0958 | 1000 |      |      | 1643   | 1648 |  |
| Towcester Tesco/A5                          | x    |      |     |      |      | 1009 | 1248 |      |        |      |  |
| Towcester Brackley Road                     | x    |      |     |      |      | 1011 | 1250 |      |        |      |  |
| Greens Norton ButchersArms                  | 0710 |      |     |      |      | 1017 | 1256 |      |        |      |  |
| Duncote Main Street                         | 0712 |      |     |      |      | 1020 | 1259 |      |        |      |  |
| Astcote Main Street                         | 0717 |      |     |      |      | 1025 | 1304 |      |        |      |  |
| Pattishall Church Street                    | 0720 |      |     |      |      | 1028 | 1307 |      |        |      |  |
| Fosters Booth Butchers Lane                 | 0723 |      |     |      |      | 1031 | 1310 |      |        |      |  |
| Eastcote Greenway                           | 0726 |      |     |      |      | 1033 | 1312 |      |        |      |  |
| Rothersthorpe Banbury Lane                  | 0733 | 0851 |     |      |      | 1040 | 1319 |      |        |      |  |
| Hunsbury Meadows Banbury Lane               | 0737 | 0855 |     |      |      | 1044 | 1323 |      |        |      |  |
| Pineham Village                             | 0739 | x    |     |      |      | x    | x    |      |        |      |  |
| Sixfields Stadium                           | 0744 | 0900 |     |      |      | 1048 | 1327 |      |        |      |  |
| Sainsburys Sainsburys                       | 0745 | 0901 |     |      |      | 1049 | 1328 |      |        |      |  |
| Northampton Rail Station                    | 0749 | 0905 |     |      |      | 1053 | 1332 |      |        |      |  |
| Northampton The Drapery                     | 0755 | 0911 |     |      |      | 1059 | 1338 |      |        |      |  |

| MONDAYS TO SATURDAYS except Public Holidays |      |           |      |        |      |         |      |      |      |      |     |
|---------------------------------------------|------|-----------|------|--------|------|---------|------|------|------|------|-----|
|                                             | 87   | 87        | 87   | X91    | X91  | 87      | 87   | 87   | X91  | 87   |     |
|                                             |      |           |      | MF Sat |      | Sch Hol |      |      |      |      |     |
| Northampton The Drapery bay 19              | 0918 | 1320      |      |        |      |         |      | 1750 | 1800 |      |     |
| Northampton Rail Station                    | 0921 | 1323      |      |        |      |         |      | 1754 | 1804 |      |     |
| St James Square Post Office                 | x    | 1326      |      |        |      |         |      | 1759 | 1809 |      |     |
| Sainsburys Sainsburys                       | x    | 1331      |      |        |      |         |      | 1800 | 1810 |      |     |
| Sixfields Stadium                           | x    | 1332      |      |        |      |         |      | x    | x    |      |     |
| Sixfields Football Ground                   | 0929 | x         |      |        |      |         |      | x    | x    |      |     |
| Pineham Village                             | 0932 | 1339      |      |        |      |         |      | x    | x    |      |     |
| Pineham Sainsburys                          | 0933 | x         |      |        |      |         |      | x    | x    |      |     |
| Swan Valley Cob Drive                       | 0936 | x         |      |        |      |         |      | x    | x    |      |     |
| Swan Valley Pets at Home                    | 0940 | x         |      |        |      |         |      | x    | x    |      |     |
| Hunsbury Meadows Banbury Lane               | 0945 | 1345      |      |        |      |         |      | 1805 | 1815 |      |     |
| Rothersthorpe Banbury Lane                  | 0949 | 1349      |      |        |      |         |      | 1809 | 1819 |      |     |
| Eastcote Greenway                           | 0956 | 1356      |      |        |      |         |      | 1816 | 1826 |      |     |
| Pattishall Church Street                    | 0958 | 1358      |      |        |      |         |      | 1818 | 1828 |      |     |
| Fosters Booth Butchers Lane                 | 1000 | 1400      |      |        |      |         |      | 1820 | 1830 |      |     |
| Astcote Main Street                         | 1004 | 1404      |      |        |      |         |      | 1824 | 1834 |      |     |
| Duncote Main Street                         | 1008 | 1408      |      |        |      |         |      | 1830 | 1840 |      |     |
| Greens Norton ButchersArms                  | 1013 | 1413      |      |        |      |         |      | 1834 | 1844 |      |     |
| Towcester Tesco/A5                          |      | 1020 1420 |      |        |      |         |      | x    | x    |      |     |
| Silverstone opp Catch Yard Farm             | 0918 |           | 1427 | 1554   | 1609 | 1702    | 1712 | 1848 | 1854 | 1858 |     |
| Silverstone UTC                             | x    | x         | x    | x      | x    | 1710    | x    | x    | x    | x    | Sch |
| Syresham Kings Head                         | x    | x         | x    | x      | x    | 1722    | 1722 | x    | x    | x    | Hol |
| Brackley TurwesternRd N                     | 0928 | 1437      | 1604 | 1619   | 1727 | 1727    | 1858 | 1904 | 1908 |      | MF  |
| Brackley SpringfieldWay                     | 0936 | x         | 1611 | 1626   | 1735 | 1735    | x    | 1911 |      |      | Sat |
| Brackley Tesco                              | 0941 | X         | x    | x      | x    | 1740    | 1740 | x    | x    | x    |     |
| Brackley Market Place                       | 0943 |           | 1442 | 1618   | 1633 | 1746    | 1746 | 1903 | 1918 | 1913 |     |

| GAYTON AND TIFFIELD COMMUNITY TRANSPORT                                                                            |                      |              |     |                                                               |
|--------------------------------------------------------------------------------------------------------------------|----------------------|--------------|-----|---------------------------------------------------------------|
| MINIBUS TIMETABLE AND FARES - From 1st JUNE 2023                                                                   |                      |              |     |                                                               |
| TUESDAYS AND FRIDAYS ONLY                                                                                          |                      |              |     |                                                               |
| FARES: BUS PASSES - FREE. VILLAGES TO TOWCESTER £6 RETURN - TO NORTHAMPTON £7 RETURN. CHILDREN UNDER 16 HALF PRICE |                      |              |     |                                                               |
| BUS TO TOWCESTER IS A SCHEDULED SERVICE<br>BUS TO NORTHAMPTON IS A REQUEST SERVICE ONLY                            |                      |              |     |                                                               |
| Please note that timetable may be subject to minor delays depending on unforeseen circumstances                    |                      |              |     |                                                               |
| TO TOWCESTER - SCHEDULED SERVICE                                                                                   |                      |              |     |                                                               |
| Stage                                                                                                              | Gayton - Start       | 9:30         | Dep | Gayton - Hillcrest Rd, Five Ways, High St, Back Lane          |
| 1                                                                                                                  | Tiff eld             | 9:40         |     | High Street - North and South                                 |
|                                                                                                                    | Eastcote             | 9:50         |     | High Street - Eastcote Arms                                   |
|                                                                                                                    | Pattishall           | 9:55         |     | Pattishall - Church St, Fosters Booth Rd, Leys Rd, Pool Close |
|                                                                                                                    | Astcote              | 10:00        |     | Astcote School, High Street                                   |
|                                                                                                                    | Towcester- Arrive    | 10:05        | Arr | Towcester - Tesco, Aldi, B&M - Market Square - Waitrose       |
| TO NORTHAMPTON - BY REQUEST                                                                                        |                      |              |     |                                                               |
| 2                                                                                                                  | Towcester - Depart   | 10:10        | Dep | Towcester - Waitrose                                          |
|                                                                                                                    | Northampton          | 10:25        |     | Tesco Mereway                                                 |
|                                                                                                                    | Northampton          | 10:35        |     | Morrisons                                                     |
|                                                                                                                    | Northampton - Arrive | 10:40        | Arr | Northampton - Drapery                                         |
| RETURN FROM TOWCESTER - SCHEDULED SERVICE                                                                          |                      |              |     |                                                               |
| 3                                                                                                                  | Towcester - Depart   | 11:15        | Dep | Towcester - Waitrose - Market Square                          |
|                                                                                                                    | Towcester            | 11:20        |     | Towcester -Tesco/Aldi/B & M                                   |
|                                                                                                                    | Tiff eld             | 11:25        |     | Tiff eld, High Street South and North                         |
|                                                                                                                    | Gayton               | 11:30        |     | Gayton (Hillcrest Rd, Five Ways, High St, Back Lane)          |
|                                                                                                                    | Eastcote             | 11:35        |     | High Street, Eastcote Arms                                    |
|                                                                                                                    | Astcote              | 11:40        |     | Astcote - School, High Street                                 |
|                                                                                                                    | Pattishall           | 11:45        | Arr | Pattishall - Church St, Fosters Booth Rd, Leys Rd, Pool Close |
| RETURN FROM NORTHAMPTON - BY REQUEST - COLLECTION TIMES TO BE CONFIRMED BY PASSENGERS                              |                      |              |     |                                                               |
| 4                                                                                                                  | Northampton - Depart | Approx 12:05 | Dep | Northampton - Drapery                                         |
|                                                                                                                    | Northampton          | 12:10        |     | Northampton - Morrisons                                       |
|                                                                                                                    | Northampton          | 12:15        |     | Northampton - Tesco Mereway                                   |
|                                                                                                                    | Gayton               | 12:25        |     | Gayton (Hillcrest Rd, Five Ways, High St, Back Lane)          |
|                                                                                                                    | Tiff eld             | 12:30        |     | Tiff eld - High Street North and South                        |
|                                                                                                                    | Eastcote             | 12:40        |     | High Street, Eastcote Arms                                    |
|                                                                                                                    | Astcote              | 12:45        |     | Astcote - School, High Street                                 |
|                                                                                                                    | Pattishall - Arrive  | 12:50        | Arr | Pattishall - Church St, Fosters Booth Rd, Leys Rd, Pool Close |



## Invitation to Lunch Club Astcote Methodist Church

If you are retired or live alone and would enjoy having lunch with a small friendly group, then please contact:  
Maureen Corbett on 830296 and book your seat. Home-cooked food is served for just £6.

**Lunch Club** is held monthly at 12 midday on the second Tuesday of the month in our warm, comfortable kitchen and is accessed through the side door on the left of the Chapel with no steps to climb. We hope you will be tempted to come along.



## Astcote Methodist Church

Acting Superintendent: Rev David Speirs 01604 705642 (on sabbatical until 26<sup>th</sup> July)

Pastoral Minister: Rev Ian Forsyth 01604 515674

ALL SUNDAY SERVICES 10.30am unless stated otherwise

**3<sup>rd</sup> March – 9-9.30am Prayer for the Community**

**10.30am Service led by Sue Foy**

**10<sup>th</sup> March – SERVICE AT ROADE METHODIST CHURCH 10.30am** (no service at Astcote)

**Tuesday 12<sup>th</sup> March – Lunch Club 12 midday**

**17<sup>th</sup> March – 10.30am FAMILY SERVICE – led by Mary Winchcombe**

**Thursday 21<sup>st</sup> March – 12-2pm Well Group** – speaker Mrs Diane Forsyth 'Changing Direction'

**24<sup>th</sup> March PALM SUNDAY – 3pm Scones of Praise led by Rev Ian Forsyth**

### EASTER

**MAUNDY THURSDAY 28<sup>th</sup> March 7.30pm - HOLY COMMUNION IN THE UPPER ROOM :**  
Rev Ian Forsyth

**GOOD FRIDAY 29<sup>th</sup> March 10-12.30pm: Come and Make an Easter Garden: Refreshments**

**EASTER SUNDAY 31<sup>st</sup> March – 9.30am Easter Breakfast**

**10.30am Easter Celebration Service**

**7<sup>th</sup> April – 9.30-10am Prayer for the Community**

**Service 10.30 Rev Tony Perry**

**Tuesday 9<sup>th</sup> April – Lunch Club 12 midday**

**14<sup>th</sup> April – Service led by Rev Ian Suttie to include Holy Communion**

**21<sup>st</sup> April – FAMILY SERVICE led by Deacon Richard Beckett**

**28<sup>th</sup> April – 3pm Scones of Praise – Rev Dr Samantha Gillard**

*(Please note preachers are subject to change)*

**CRAFTERNOON EVERY MONDAY 2-4PM – ALL WELCOME**

**BIBLE STUDY 7.30-9PM TUESDAY EVENINGS – ALL WELCOME**, check noticeboard for details

**BABY & TODDLER GROUP 9-11AM EVERY WEDNESDAY IN TERM TIME**

For information on any Services of events at Astcote Chapel please contact:

Ann Atkin 830907, [ann.atkin51@btinternet.com](mailto:ann.atkin51@btinternet.com) or Kate Stretton 830115



### **Astcote Chapel and Rooms are Available to Hire**

The Chapel has seating for 50+ people with a small stage area. The upstairs room offers an ideal space for a small group to meet and the kitchen is well equipped in a smaller meeting room downstairs. Disabled access to ground floor.

If you are looking for a place to meet why not come and have a look? Contact Kate Stretton 830115



# Local Carpenter

For Free Quotation call:

**Paul Nicholls**  
**01327 358048**  
**07890 668307**

[paulnicholls\\_1@hotmail.com](mailto:paulnicholls_1@hotmail.com)



## SGL PRINT & DESIGN

**YOUR LOCAL PRINTER**

- STATIONERY
- BROCHURES / FLYERS
- VINYL BANNERS
- ROLLER BANNERS
- EMBROIDERED GARMENTS
- PROMOTIONAL GIFTS

**BUY ONLINE ON**  
**[www.sglppp.com](http://www.sglppp.com)**  
**or call us on 01327 359117**

## Astcote Chapel 150<sup>th</sup> Anniversary

2024 will see the 150<sup>th</sup> Anniversary of the Chapel building in Astcote – although Methodists had been meeting for some time before 1874 in the village. We are planning celebrations – particularly over the weekend of 3<sup>rd</sup> August.

In Chapel records the names of local families are recorded who were involved in some way in the life of the Chapel early in the 1800s. Could any of these be your ancestors?

Edward, Mary, Hannah, John, Ann, Sam or Sarah STAMP

Hannah, Susannah, Elizabeth, or Sarah BIRD

John HARVEY

Sarah or Jane JONES

Hannah or Thomas WATERS

John or Ambrose JUDKINS

Elizabeth KINGSTON

Sarah GARDINER

John MARRIOTT

Thomas EVANS

Arthur HEEL

Elizabeth or William PELL

Hugh, May, Frederick or Phoebe ASHBY

Ann LUCAS

William or Martha PALMER

Thomas SKERRY

William or Ernest STEEL

The foundation stones were laid in 1874 by George West, Mrs Ashworth, Mr Joseph Gibbs and W. Humphreys – these names are on the front of the Chapel.

If you have any record or knowledge of any connection your family has had with the Chapel we would love to hear from you. Perhaps someone went to Sunday School, or was christened there.

**Do you have any old photos of the building or activities connected with it?**  
**WE WOULD LOVE TO HEAR FROM YOU!**



Please contact: John or Ann Atkin 01327 830907 or email [ann.atkin51@btinternet.com](mailto:ann.atkin51@btinternet.com) OR Kate Stretton 01327 830115 or email [kate.stretton@btinternet.com](mailto:kate.stretton@btinternet.com)

Thank you.

HOLY CROSS CHURCH, PATTISHALL

## CRAFTS & PLAY

Fridays

12th, 19th, 26th January

2nd, 9th, 16th February

1st, 8th, 15th March

3.00-4.30 pm



Crafts and toys  
Tea/Coffee and  
cake  
Bible Stories

Everyone welcome



## TRIDENT SPORTSWEAR

**SUPPLIER OF**

**BESPOKE TEAMWEAR  
& TROPHIES**

**FOR VARIOUS SPORTS**

**DESIGN YOUR OWN KIT  
USING OUR 3D  
KIT DESIGNER**

**Visit [www.tridentsportswear.com](http://www.tridentsportswear.com)**  
**or call us on 01327 353400**

Unit 8, Lucas Bridge Business Park,  
Old Greens Norton Road,  
Towcester, Northants, NN12 8AX

## Astcote Methodist Church

***'Scones of Praise'***

***Sundays at 3pm on***  
***24<sup>th</sup> March***  
***28<sup>th</sup> April***

Enjoy a relaxed  
Songs of Praise Service  
with tea & scones



## Holy Cross, Pattishall and St Luke, Cold Higham

(part of the Amelcote Benefice)

It has been announced by the Diocese of Peterborough that Revd Marion Reynolds has been appointed Rector (House for Duty) for the Amelcote Benefice.

We look forward to welcoming Revd Marion back to the Benefice when she takes up her post in March.

### Services for March and April 2024

| Date                                      | Time | Service                 | Church      |
|-------------------------------------------|------|-------------------------|-------------|
| March 3rd                                 | 10am | Family Communion        | Cold Higham |
| March 10th                                | 10am | Family Communion        | Tiffield    |
| March 17th                                | 10am | Family Communion        | Pattishall  |
| March 24 <sup>th</sup><br>Palm Sunday     | 10am | Family Communion        | Gayton      |
| March 28 <sup>th</sup><br>Maundy Thursday | 7pm  | Communion               | Pattishall  |
| March 29 <sup>th</sup><br>Good Friday     | 2pm  | The Last Hour           | Cold Higham |
| March 30 <sup>th</sup><br>Easter Saturday | 7pm  | Service of Light        | Tiffield    |
| March 31 <sup>st</sup><br>Easter Sunday   | 10am | Easter Family Communion | Pattishall  |
| April 7th                                 | 10am | Family Communion        | Cold Higham |
| April 14th                                | 10am | Family Communion        | Tiffield    |
| April 21st                                | 10am | Family Communion        | Pattishall  |
| April 28th                                | 10am | Family Communion        | Gayton      |

We have a weekly news sheet for readings, prayers and up-to-the-minute information on services. Email Chris Bulleid on [amelcote.info@gmail.com](mailto:amelcote.info@gmail.com) if you would like to be added to the mailing list.

#### Churchwardens

Cold Higham - Pauline Pearson, 01327 830287  
Pattishall - Alison Brierley, 01327 830770

#### Reader

Sue Titheridge, 01327 351219

#### Lay Pastoral Assistant

Jean Pugh, 01327 830909

# DIARY DATES

## March

- 1<sup>st</sup> Pattishall Cafe, Pattishall Parish Hall, 12 - 2pm
- 6<sup>th</sup> Gardening Club: *Rose pruning*, Pattishall Parish Hall, 7.30pm
- 7<sup>th</sup> Lent Lunch, Holmeview, Eastcote, 11.45am-1.15pm
- 7<sup>th</sup> Pattishall Parish Hall & Playing Field meetings, Patt. Parish Hall, 7pm
- 9<sup>th</sup> Barn Dance, Pattishall Parish Hall, 7.30pm
- 13<sup>th</sup> WI: *Annual Meeting*, Pattishall Parish Hall, 7.30pm
- 14<sup>th</sup> Lent Lunch, Holmeview, Eastcote, 11.45am-1.15pm
- 14<sup>th</sup> Good Neighbours: *AGM & social afternoon*, Cold Higham Hall, 1.45pm
- 14<sup>th</sup> Cold Higham PC Meeting, Cold Higham Parish Hall, 6pm
- 14<sup>th</sup> Pattishall Parish Council Meeting, Pattishall Parish Hall, 7pm
- 15<sup>th</sup> Pattishall Cafe, Pattishall Parish Hall, 12-2pm
- 16<sup>th</sup> Quiz & Chilli supper, Cold Higham Hall, from 7pm
- 21<sup>st</sup> Lent Lunch, Holmeview, Eastcote, 11.45am-1.15pm
- 22<sup>nd</sup> Pattishall Community Open Day, Pattishall Parish Hall, 3-9pm
- 23<sup>rd</sup> Annual Pattishall Parish Litter Pick, Pattishall Parish Hall, 10am
- 28<sup>th</sup> End of Pattishall School term
- 28<sup>th</sup> Local History: *Astcote & Eastcote Buildings*, Patt. Parish Hall, 7.30pm
- 29<sup>th</sup> Make an Easter Garden, Astcote Methodist Church, 10am-12.30pm
- 29<sup>th</sup> Pattishall Cafe, Pattishall Parish Hall, 12-2pm

## April

- 3<sup>rd</sup> Gardening Club: *Wildlife Gardening*, Pattishall Parish Hall, 7.30pm
- 4<sup>th</sup> Pattishall Parish Hall & Playing Field meetings, Patt. Parish Hall, 7pm
- 7<sup>th</sup> Afternoon Tea at Holy Cross Church, Pattishall, 3-4.30pm
- 10<sup>th</sup> WI: speaker *TBC*, Pattishall Parish Hall, 7.30pm
- 11<sup>th</sup> Good Neighbours: *D. Wilcock on Caswell*, Cold Higham Hall, 1.45pm
- 11<sup>th</sup> Pattishall Parish Council Meeting, Pattishall Parish Hall, 7pm
- 12<sup>th</sup> Pattishall Cafe, Pattishall Parish Hall, 12-2pm
- 16<sup>th</sup> Start of Pattishall School term
- 17<sup>th</sup> Gardening Club: Spring visit to Batsford Arboretum
- 20<sup>th</sup> Quiz Night, Holy Cross Church, Pattishall, 7.30pm
- 25<sup>th</sup> Local History: *Buildings in Pattishall*, Pattishall Hall, 7.30pm
- 26<sup>th</sup> Pattishall Cafe, Pattishall Parish Hall, 12-2pm

Copy date for the May-June 2024 newsletter will be 10<sup>th</sup> April. Copy should be sent to The Old Farmhouse, 13 High Street, Astcote (email [ap@stewarts.me.uk](mailto:ap@stewarts.me.uk), tel: 830042). Please use email if possible.

Pattishall Parish Council undertakes the production of the newsletter, it does not take responsibility for the accuracy of articles. Any views or opinions expressed are those of the author in each case.

Would you like to see your photograph or artwork on the cover of the next Around Pattishall? If so, please email. It should be something with a local and seasonal flavour.

Published by Pattishall Parish Council  
Printed by SGL, Towcester: [sglppp.co.uk](http://sglppp.co.uk) 01327 359117



# Kitchens



# Bathrooms



Our team of experienced craftsmen will manufacture your new **kitchen, bathroom or bedroom** furniture to the highest standards at our Towcester design studio.

All of our kitchen designs offer a life time guarantee on drawer runners and hinges and you can select from Granite, Quartz and Corian worktops with 10 year guarantees.

You can decide to get us to project manage every aspect including building work, extensions, windows, doors, flooring, even the decoration, if you choose.

Leaving you to enjoy the finished results!

# Bedrooms



**parker**kitchens



For your perfect **kitchen, bathroom or bedroom**

For your initial consultation call **01327 359282**

Or visit: The Design Studio, The Old Cattle Market, Watling Street East, Towcester NN12 6HN

**www.parkerkitchens.co.uk**

 @ParkerKitchens  @ParkerKitchensInteriors  @Parker\_Kitchens\_  @parker-kitchens